

Product Catalogue

2022



GAS DATA
LISTEN · ANALYSE · INFORM

WORDS FROM OUR MANAGING DIRECTOR

As we celebrate our 30th anniversary, our contribution to renewable energy generation, process efficiency, environmental monitoring and safety feels more important than ever.

Our talented and dedicated team is driven and empowered to deliver exceptional customer service.

Our products are renowned for accuracy, reliability, ease of operation, and rapid servicing. This offers users a low total cost of ownership and most importantly – helps our customer's decision making every day and in every place. We listen, analyse, inform.

I look forward to our exciting future, built on enduring strategic partnerships, advancing the science behind gas data.



STEVE BILLINGHAM

MANAGING DIRECTOR, GAS DATA LTD

Gas Data was formed in 1991 from a passion to improve the instruments that analyse gases for industrial purposes. By listening to our customers and focusing on specific applications, we have developed a range of fixed and portable, handheld analysers that are recognised performance leaders in their fields.

LISTEN, ANALYSE, INFORM

We ensure our active listening extends beyond product design to all areas of our business; technical pre-sales, the commissioning process and the after-sales service. We believe that by focusing on our customers and ensuring our products and processes meet their demanding needs, we create a key differentiator for us and can then build mutually beneficial long-term partnerships.

In the UK we provide a full range of installation, commissioning and maintenance services and we have an increasing global reach through

our worldwide, strategic network of commercial and service partners. Overall, we supply and support over 1,500 end-user customers in over 50 countries.

We are proud to be involved in applications that make a difference to our world, from industrial and factory processes, such as wastewater & sewage treatment or biomethane generation, to landfill monitoring, land remediation, odour control and more. We believe that our products are empowering environmental evolution as all our customers strive to improve their impact on the environment.

For more information visit our website: gasdata.co.uk

WE ARE AN ATEX CERTIFIED (80079-34 ATEX) MANUFACTURER AND HAVE ISO CERTIFICATION FOR QUALITY (ISO 9001), HEALTH & SAFETY (ISO 45001) AND ENVIRONMENTAL MANAGEMENT (ISO 14001). WE ACTIVELY PARTICIPATE IN INDUSTRY ASSOCIATIONS SUCH AS THE ANAEROBIC DIGESTION AND BIORESOURCES ASSOCIATION (ADBA) AND THE WORLD BIOGAS ASSOCIATION (WBA).

OUR ACCREDITATIONS



OUR MEMBERSHIPS



Products Summary

PORTABLE GAS ANALYSERS

- [GFM 406](#)
- [GFM 426](#)
- [GFM 436](#)
- [GFM 610](#)
- [GFM 226](#)

FIXED GAS ANALYSERS

- [Click! Flexi](#)
- [Click! Light](#)
- [Click! Ex](#)
- [Click! Safety+](#)

Portable Gas Analysers



AVAILABLE TO BUY OR HIRE



MEASURES

CH₄

CO₂

CO

O₂

H₂S

H₂



This **GFM 406** combines simple functions with a high level of measurement accuracy and is therefore ideal for all basic measurements on Biogas, Syngas, Landfill and Odour Monitoring. It has a long-term battery lifetime of 8 to 12 hours, guaranteeing high availability to the client. This instrument can provide three different pressure points: Atmospheric, Static (Gauge) and Differential - as optional extras.

FEATURES

- ATEX certified - II 2 G Ex ib IIB T1 Gb
- Custom selection gas monitor
- Small and portable- easily fits in one hand
- High contrast LCD Display
- Data logging flash memory storage and PC upload, 3000 readings
- Battery lifetime from 8 to 12 hours

ACCESSORIES

- USB download with SiteMan Pc Software
- USB data cable
- Protective, weather-proof leather case
- Charger suited to client's country
- Sample pipe
- Small spares pot
- Allen Key

OPTIONAL ACCESSORIES

- An additional vane anemometer to measure gas velocity (0.5-40m/s)
- An additional brass probe to measure gas temperature (-10 to 100° C)

ADDITIONAL MEASUREMENTS:

- N₂ Balance
- LEL Percentage Calculation

INSTRUMENT SPECIFICATIONS

Operating Temperature	-10°C<0<40°C
Ingress Protection	IP65
Max Input Pressure	30mB
Pump Flow	500ml/min
Dimension	230mmx100mmx65mm
Material	Black ABS
Weight	1kg

Once a year all items must be recalibrated and serviced to ensure optimum performance and safety.



AVAILABLE TO BUY OR HIRE



MEASURES

CH4

CO2

O2

H2S

H2



The **GFM 426** is a fixed configuration five-gas analyser designed specifically for landfill operations. This instrument has all the essential functions to measure gas and pressure. It also provides different pressure measurements: Atmospheric; Static (Gauge); Differential. GFM 426 has a long-term battery lifetime of 8 to 12 hours, guaranteeing high availability to the client.

FEATURES

- ATEX certified - II 2 G Ex ib IIB T1 Gb
- LEL calculation
- Flow rate reading through differential pressure
- Small and portable- easily fits in one hand
- High contrast LCD Display
- Data logging flash memory storage and PC upload, 3000 readings
- Battery lifetime from 8 to 12 hours

ACCESSORIES

- USB download with SiteMan Pc Software
- USB data cable
- Protective, weather-proof leather case
- Charger suited to client's country
- Sample pipe
- Small spares pot
- Allen Key

OPTIONAL ACCESSORIES

- An additional vane anemometer to measure gas velocity (0.5-40m/s)
- An additional brass probe to measure gas temperature (-10 to 100° C)

INSTRUMENT SPECIFICATIONS

Operating Temperature	-10°C<0<40°C
Ingress Protection	IP65
Max Input Pressure	30mB
Pump Flow	500ml/min
Dimension	230mmx100mmx65mm
Material	Black ABS
Calculation	N2 Balance
Weight	1kg

Once a year all items must be recalibrated and serviced to ensure optimum performance and safety.



AVAILABLE TO BUY OR HIRE



MEASURES

CH4

CO2

O2

H2S

CO

HEXANE



The **GFM 436** gas analyser is a fixed configuration, designed for site investigation, landfill gas control and environmental regulation compliance monitoring. This instrument has all the essential functions to measure gas and pressure. It also provides different pressure measurements: Atmospheric and Differential. GFM 436 measure gas components as well as flow and pressure. It has a long-term battery lifetime of 8 to 12 hours, guaranteeing high availability to the client.

FEATURES

- ATEX certified - II 2 G Ex ib IIB T1 Gb
- Small and portable- easily fits in one hand
- High contrast LCD Display
- Detector (PID) correction factor for low levels of Volatile Organic Compounds (VOC)
- Storage of 2 water level readings from dipmeter taken at each borehole
- Data logging flash memory storage and PC upload, 3000 readings
- Flow rate through internal sensor
- Battery lifetime from 8 to 12 hours

ACCESSORIES

- USB download with SiteMan Pc Software
- USB data cable
- Protective, weather-proof leather case
- Charger suited to client's country
- Sample pipe
- Small spares pot
- Allen Key

OPTIONAL ACCESSORIES

- An additional vane anemometer to measure gas velocity (0.5-40m/s)
- An additional brass probe to measure gas temperature (-10 to 100° C)

INSTRUMENT SPECIFICATIONS

Operating Temperature	-10°C<0<40°C
Ingress Protection	IP65
Max Input Pressure	30mB
Pump Flow	500ml/min
Dimension	230mmx100mmx65mm
Material	Black ABS
Calculation	LEL %
Weight	1kg

Once a year all items must be recalibrated and serviced to ensure optimum performance and safety.



AVAILABLE TO BUY OR HIRE



MEASURES

- GAS FLOW
- PRESSURE METER



The **GFM 610** portable instrument has all the essential functions to measure the flow of any gas and pressure from the perimeter boreholes on landfill and contaminated land sites and also provides Atmospheric pressure measurements. It has a long-term battery lifetime of 8 to 12 hours, guaranteeing high availability to the client.

FEATURES

- ATEX certified - II 2 G Ex ib IIB T1 Gb
- Small and portable- easily fits in one hand
- High contrast LCD Display
- Data logging flash memory storage and PC upload, 3000 readings
- Battery lifetime from 8 to 12 hours

ACCESSORIES

- USB download with SiteMan Pc Software
- USB data cable
- Protective, weather-proof leather case
- Charger suited to client's country
- Sample pipe
- Small spares pot
- Allen Key

OPTIONAL FEATURE

- An additional vane anemometer to measure gas velocity (0.5-40m/s)

INSTRUMENT SPECIFICATIONS

Operating Temperature	-10°C<0<40°C
Ingress Protection	IP65
Max Input Pressure	30mB
Dimension	230mmx100mmx65mm
Material	Black ABS
Weight	1kg

Once a year all items must be recalibrated and serviced to ensure optimum performance and safety.



AVAILABLE TO BUY OR HIRE



The **GFM 226** is a portable CO2 detector designed specifically to locate and detect a hidden human presence in confined spaces. This instrument is used by Border Security, Prison Offices, Manufacturers and Warehouses. It measures elevated levels of CO2, and reduced levels of O2, by analysing poorly ventilated areas. It has a long-term battery lifetime of 8 to 12 hours, guaranteeing high availability to the client.

FEATURES

- Small and portable- easily fits in one hand
- High contrast LCD Display
- Data logging flash memory storage and PC upload, 3000 readings
- User definable threshold alarm
- Battery lifetime from 8 to 12 hours

ACCESSORIES

- Charger suited to client's country
- Sample pipe
- Small spares pot
- Allen Key

OPTIONAL ACCESSORIES

- Under door probe
- 1m lance probe

INSTRUMENT SPECIFICATIONS

Operating Temperature	-10°C<0<40°C
Ingress Protection	IP65
Input Pressure	30mB
Pump Flow	500ml/min
Dimension	230mmx100mmx65mm
Material	Black ABS
Weight	1kg

MEASURES

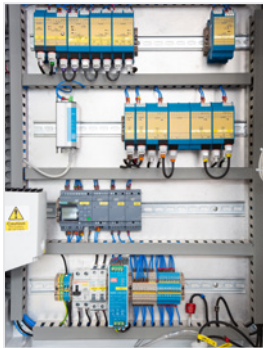
CO2

O2

Fixed Gas Analysers



INSIDE VIEW



The Click! Flexi is the most advanced fixed gas analyser of the range. The flexibility of this instrument accommodates all standard features and the most demanding industrial applications. It analyses up to six gases from multiple sample points.

FEATURES

- Flexible configuration gas analyser
- Internal leak detector
- Support multiple sample points
- Supports dual gas range analysis for increased accuracy at low ranges

OPTIONAL FEATURES

- Gas Data Portal with 24/7 online data access
- Analogue 4-20mA outputs
- Orifice plate flow meters for gas volume calculations
- Calorific value calculation
- Supports all common industrial communications protocols, PROFIBUS-DP, PROFINET and MODBUS TCP/IP
- Pressure regulator is available

TECHNICAL SPECIFICATIONS

Operating Temperature	-10°C<0<40°C
Ingress Protection	IP56
Max Input Pressure	30mb
Supply Input	24VDC, 110-240VAC
Dimension	600mmx800mm
Material	GRP
Calculation	GCV, Balance
Additional sample point	Up to 10
Default data output	SD Card
Display	Inner door display

MEASURES

CH4

CO2

CO

O2

H2S

H2

Once a year all items must be recalibrated and serviced to ensure optimum performance and safety.

CLICK! SYSTEMS



INSIDE VIEW



Reliable, low cost and easy to maintain, the Click! Light is designed specifically for the smaller scale anaerobic digestion plants and gasification applications where cost-effectiveness without compromising quality is essential.

FEATURES

- Small and Entry-level fixed gas analyser
- Up to 2 sample points
- Dual H2S measurements, pre and post scrubber
- Display for diagnostics and data access

OPTIONAL FEATURES

- Analogue 4-20mA output
- Calorific value calculation
- Orifice plate flow meters for gas volume calculations
- Gas Data Portal with 24/7 online data access
- Pressure regulator is available

TECHNICAL SPECIFICATIONS

Operating Temperature	10°C<0<40°C
Ingress Protection	IP56
Max Input Pressure	30mb
Supply Input	24VDC, 110-240VAC
Dimension	500mmx400mm
Material	GRP
Calculation	GCV, Balance
Default data output	SD Card

MEASURES

CH4

CO2

CO

O2

H2S

H2

Once a year all items must be recalibrated and serviced to ensure optimum performance and safety.



INSIDE VIEW



The Click! Ex is approved for operation in an explosive atmosphere, and it has exceptional performance for the CHP engines manufacturers and the oil & gas industry. The modular design of the sensor is unmatched in the industry, which defines the low cost-effectiveness and minimum downtime of the fixed instrument.

FEATURES

- ATEX Certified - II 2 G Ex db IIB T6 Gb
- Explosion proof
- Can accommodate up to 2 analogue inputs for data integration from external sensors, e.g., pressure and flow
- Single sample point

OPTIONAL FEATURES

- Gas Data Portal with 24/7 online data access
- Supports all common industrial communications protocols, PROFIBUS-DP, PROFINET and MODBUS TCP/IP
- Pressure regulator is available

TECHNICAL SPECIFICATIONS

Operating Temperature	10°C<0<40°C
Ingress Protection	IP56
Max Flow Pressure	30mb
Supply Input	24VDC, 110-240VAC
Material	Aluminium
Calculation	GCV, Balance
Default data output	SD Card
Display	Optional control panel

MEASURES

CH4

CO2

CO

O2

H2S

H2



Once a year all items must be recalibrated and serviced to ensure optimum performance and safety.



Click! Safety+ offers analogue outputs with digital multiplexing and digital alarm outputs as standard. It features a dual-enclosure design, removing any potential sources of ignition from the gas analysis module. Its core benefit, however, is its safety boot sequence; ensuring safe start up every time.

FEATURES

- ATEX rated LEL sensor.

OPTIONAL FEATURES

- Gas Data Portal with 24/7 online data access
- Pressure regulator is available

TECHNICAL SPECIFICATIONS

Operating Temperature	10°C<0<40°C
Storage Temperature	10°C≤ 0≤ 40°C
Ingress Protection	IP56
Max Flow Pressure	30mb
Supply Input	24VDC, 110-240VAC
Dimension	GRP 600mmx800mm + 400mmx600mm
Display	HMI touch screen
Material	GRP



MEASURES

CH4

H2S

Once a year all items must be recalibrated and serviced to ensure optimum performance and safety.

Accessories



GFM CABLES

- GFM Temperature Probe Extension Cable – 1m
- GFM Vane Anemometer Probe 0.5–40m/s
- GFM Brass Temperature Probe
- GFM T-Piece Temperature Probe
- Universal DC In-Car Multi Voltage Power Adaptor
- GFM USB Download Cable

CONNECTORS

- Calibration Check Gas Regulator

Consumables & Spares



FILTERS & VALVE

- GFM Internal Filter 15mm
- GFM External Filter 25mm
- GFM External Filter 50mm
- Click! Filter 12–32–50C
- Click! Sample Line Disk Filter 25mm 0.45µm
- Click! Check Valve

SAMPLE PIPE & TUBE

- GFM Sample Pipe
- GFM 436 Sample Tube
- GFM 436/GFM 610 Flow Tube
- GFM/Click! Sample Connector
- GFM Sample Pipe Connectors (Female)
- GFM Sample Tube Connectors (Male Plastic)

GFM CASING & BATTERY

- AC Mains Battery Charger
- Black Hard Case
- GFM Series Leather Case
- Battery Pack
- Battery Cover

CLICK! MODULES

- Click! Valve
- Click! Pump
- Click! Flow
- Click! Air Filter
- Click! Leak Detector

Data Portal



Click! Systems utilise the cloud-based Gas Data Portal to monitor and manage your gas analysis operations. Reviewing data collection of your fixed designs allows you to make better decisions and ensure everything is running smoothly on-site. Your team can have instant access to historic data in a graphical or tabular form.

With Gas Data Portal, users receive real-time alerts via email notifications, enabling them to act quickly and efficiently.

The data can be exported for further analysis in CSV format or processed to be submitted to regulatory bodies. The portal is a safety Internet of Things (IoT) platform and designed with cybersecurity in mind. It offers the protection and connectivity you need to access your gas data from any place at any time. Users are assigned unique personal logins with appropriate access rights for data control and the system's integrity.

Servicing & Maintenance

Gas Data can help with service and maintenance of our fixed and portable analysers. We offer an active service plan to ensure optimum performance, reliability and extended operational life of your instruments.

PORTABLE INSTRUMENT SERVICE AND MAINTENANCE:

Gas Data handheld instruments require annual servicing and calibration. Our highly skilled technical engineers service and calibrate your portable instruments in our facilities in the UK and ensure our ISO9001 certificate standards is applied throughout the process.

Contact Gas Data team for more information regarding the details of your service plan.

FIXED SYSTEMS SERVICE AND MAINTENANCE

Click! Systems require annual servicing and Gas Data offer comprehensive maintenance contracts to ensure continual running of your fixed system. Our maintenance contract includes reactive visits from our engineers, service and calibration of the equipment.

INSTRUMENT HIRE

When you need gas analysers, renting is the most efficient and effective route. Our range of GFM instruments covers a wide range of industry applications and are available for short and long-term hires.

LISTEN · ANALYSE · INFORM



Gas Data is part of the Ecotec Group



Gas Data LTD

Unit 4, Fairfield Court
Coventry, CV3 4LJ
United Kingdom

+44 (0) 24 7630 3311
office@gasdata.co.uk
www.gasdata.co.uk